



CEF SALTED

Situation-Aware Linked heterogeneous Enriched Data
(SALTED)





CEF SALTED Goals

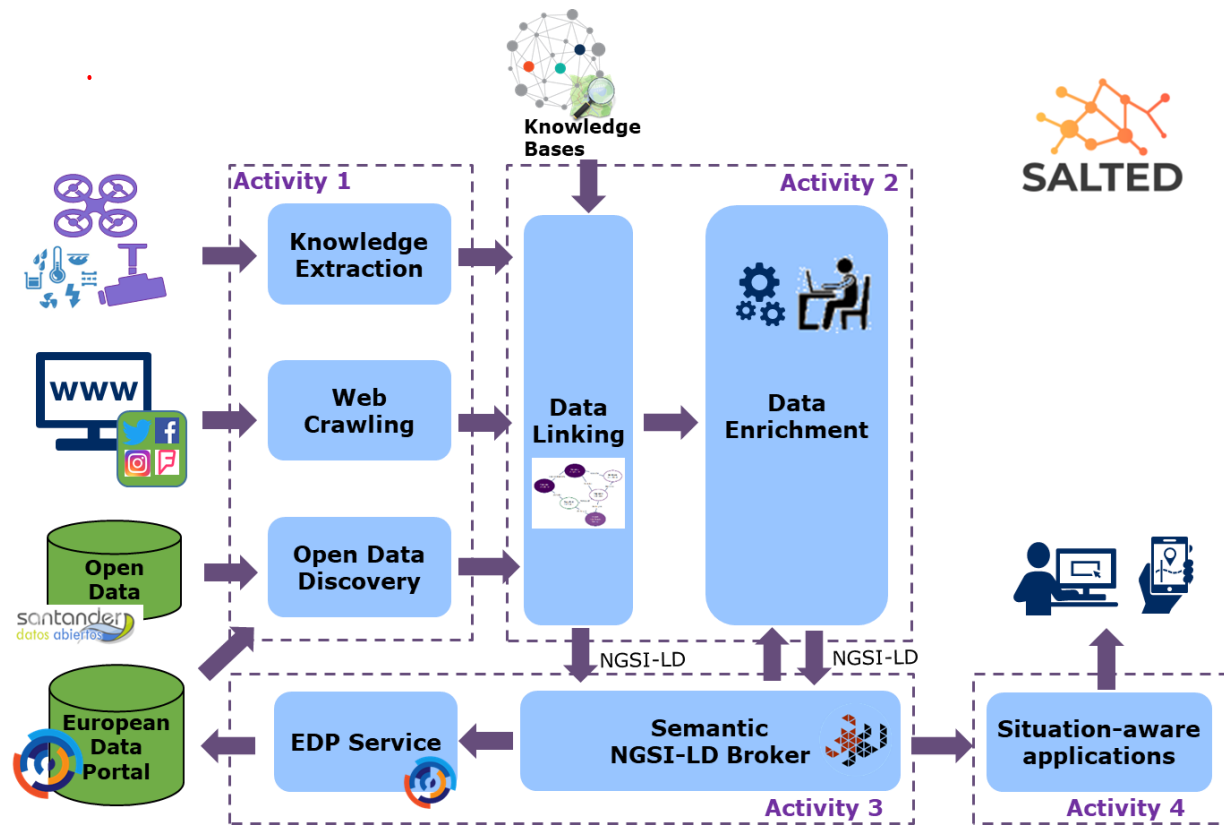
- Add value to existing Data Sets and Data-Streams
- Utilize AI for entity alignment, entity linking, data enrichment and contextualization
- Create (contextualized) Digital Twins for places and situations
- Calculate risk-factors, predict Anomalies, propose Optimizations
- Feed the Results to the European Data Portal in NGSI-LD



Technical Approach

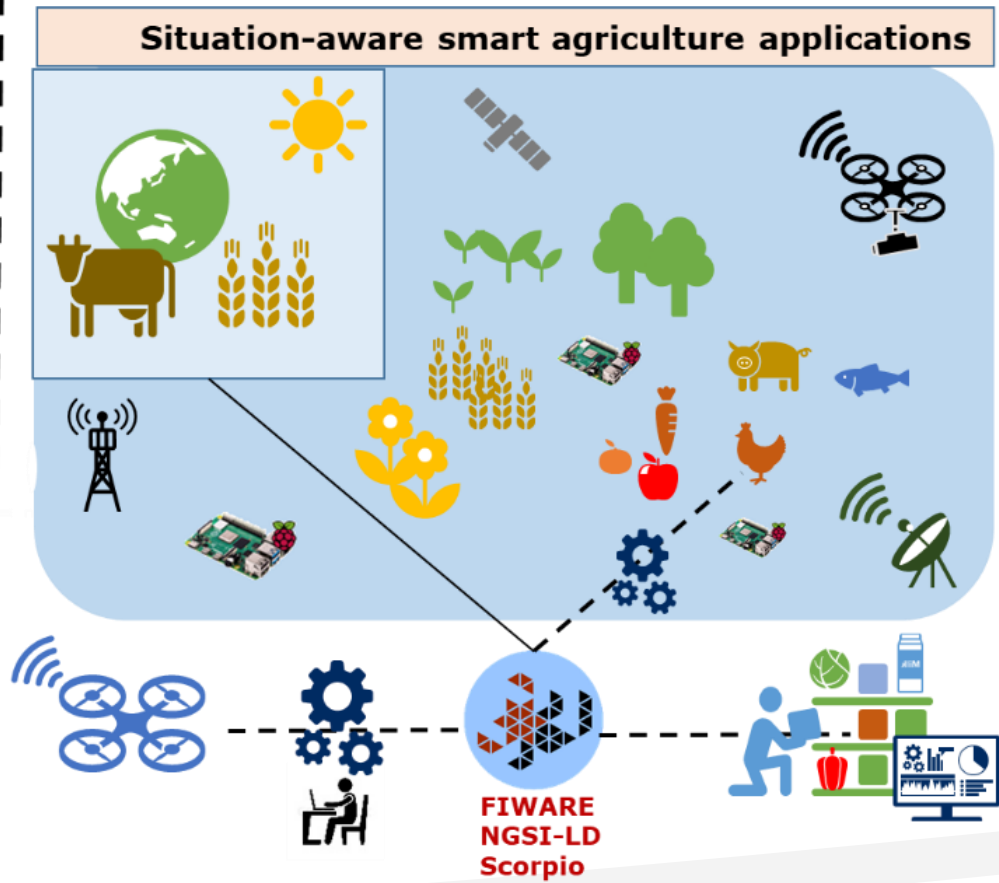
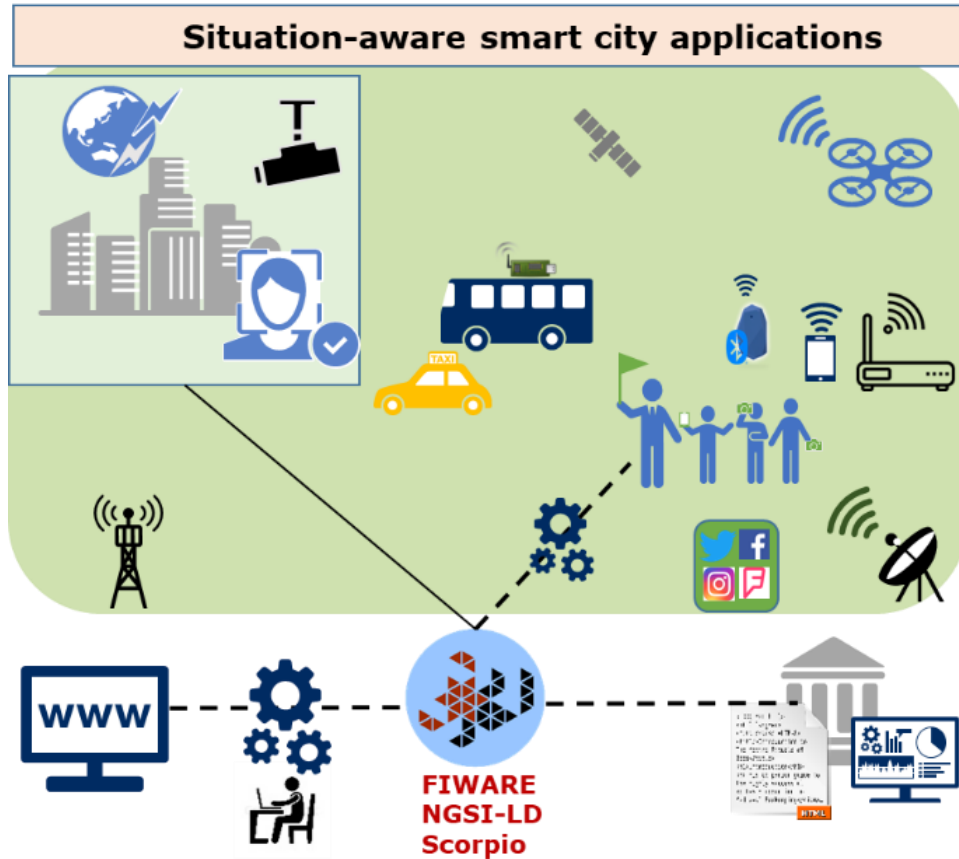


- create AI-based Data Enrichment Toolchain (DET)
- create basic AI engines and AI methodologies
- (domain neutral) situation-aware atomic service + domain specific services for Smart City/Agriculture
- ensure DET toolchain enables tracing of data use and (automatic) checking of Fair AI use (OASC MIM 5)

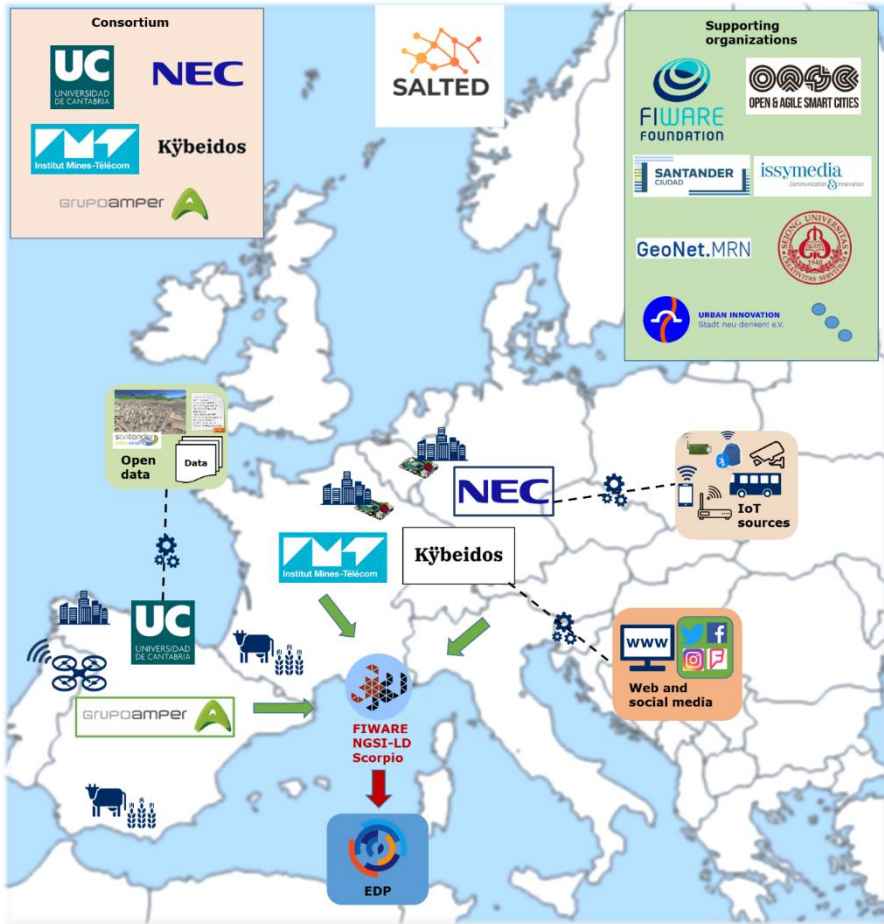




CEF SALTED Example Services



Participants



Participant	Role	Important Aspect
Universidad de Cantabria	Project Leader, Technology Provider, Use Case Provider	Close Link to City of Santander + Smart Agriculture
NEC Laboratories Europe GmbH	Technology Provider: NGS-LD and AI for Data Enrichment	Platform Provider, Standardization, AI technology, Data Enrichment
Amper Sistemas S.A.	Drone+Remote Sensing / Public Safety Information	Drone → creating respective data models → socioeconomic data about cities
Kybeidos Gesellschaft für Systeme zur Unternehmenssteuerung mbH	NLP and Web Crawling, Heidelberg Data	Local SME with good connections to Heidelberg
Institut Mines-Telecom	Research Partner	Digital Twin and AI, Social Media Analysis

Participant Capability Matrix

	UC	NEC	Kybeidos	Amper	IMT
Data provider	X			X	X
Open Data Discovery	X				
Knowledge extraction			X	X	
Web Crawling			X		X
Data Modelling	X	X	X		X
Data Linking		X		X	X
AI-based data enrichment		X	X		X
Semantic data broker		X			
Open data publisher	X				
Situation-aware Applications developer	X	X	X	X	



Summary



CEF SALTED will

- Research, develop, and provide a *AI-based Data Enrichment Pipeline (DET)*
- Create needed *AI components for Knowledge Extraction and Data Enrichment*
- Provide the *Service Infrastructure in terms of atomic and business services*
- Provide enriched *Data as Open Data and into the European Data Portal*